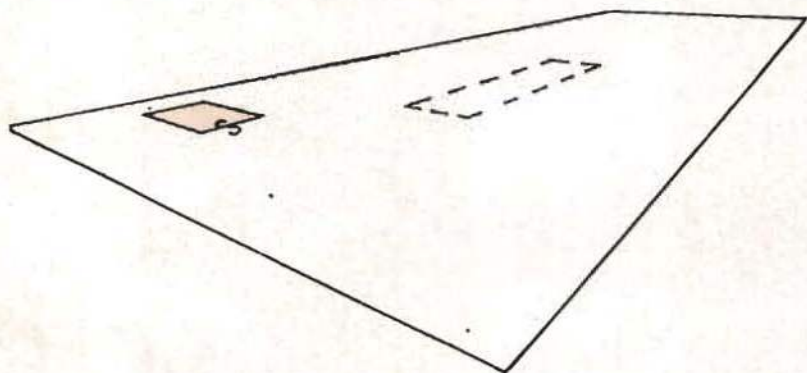
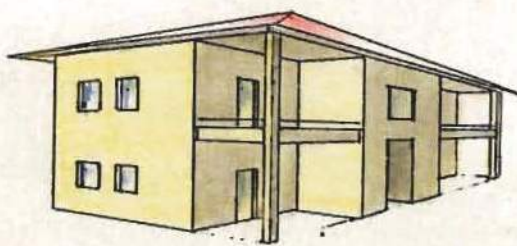
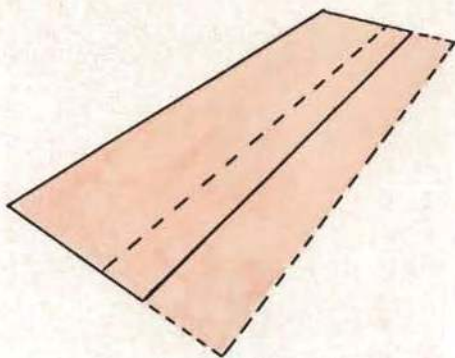


*Stazione di servizio carburanti
con chiosco e pensilina.*

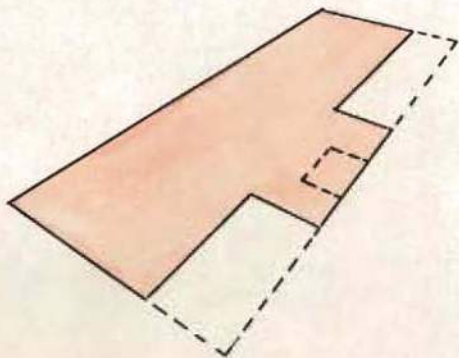


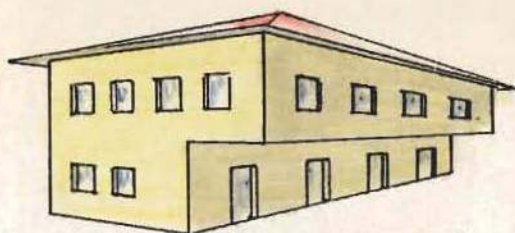


*Fabbricato con portico e
corpo aggettante*

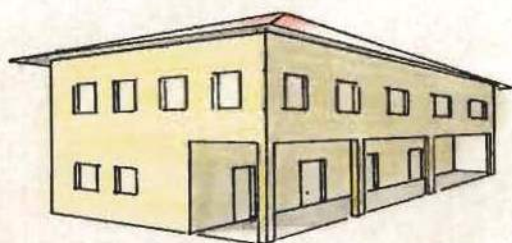
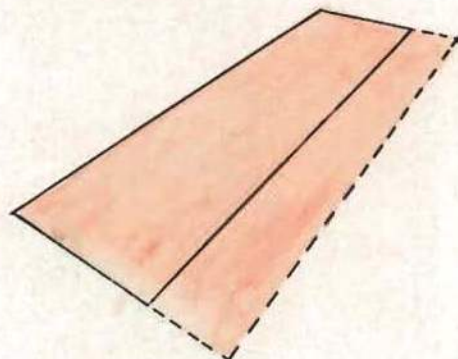


*Fabbricato con balconi sorretti da
pilastri e andito arretrato*

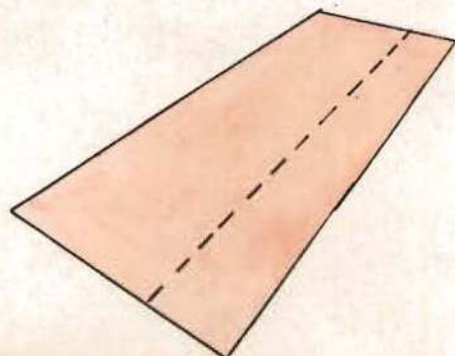


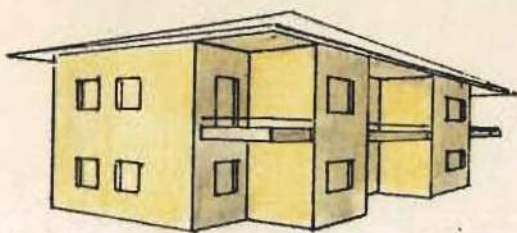


Fabbricato con corpo aggettante

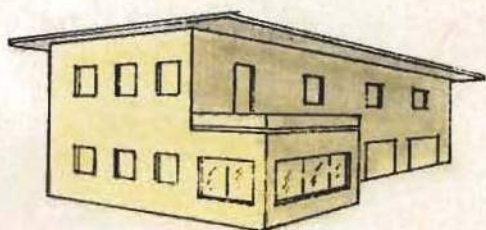
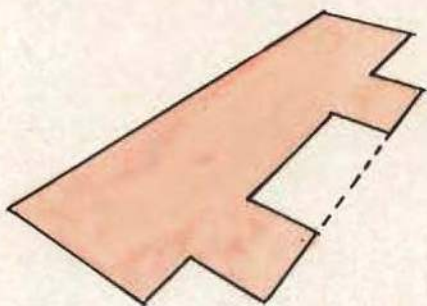


Fabbricato con portico

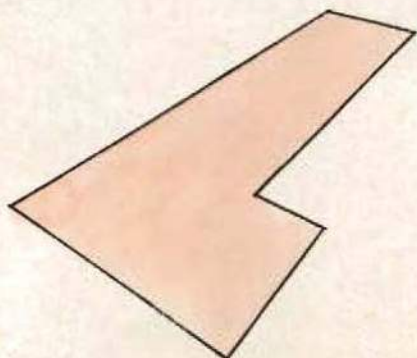


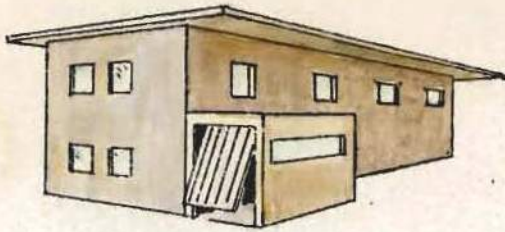


*Fabbricato con balconi a sbalzo e
balcone centrale incassato*

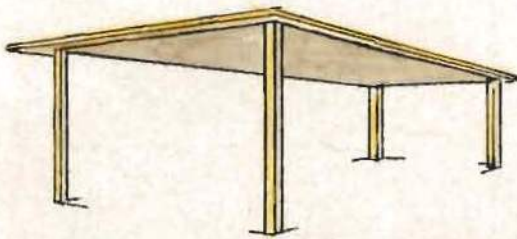
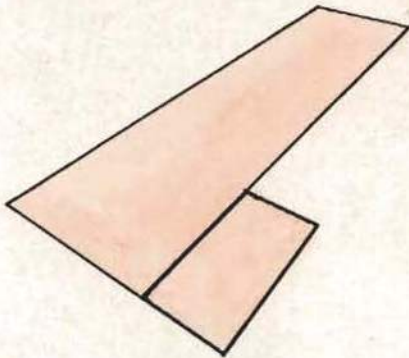


*Fabbricato unico composto da corpi
di fabbrica di diversa elevazione avente
le stesse caratteristiche costruttive
ed architettoniche.*

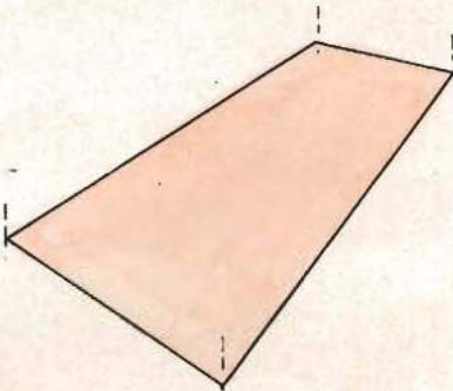




*Fabbricato con attinenza coperta
non disgiunta, avente caratteristiche
costruttive ed architettoniche diverse*

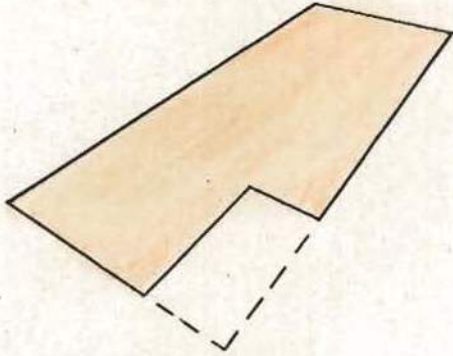


Tettoia appoggiata su pilastri





*Villetta con seminterrato e con
terrapieno sottostante il portico*



*Villetta con seminterrato sottostante
anche il portico*

